



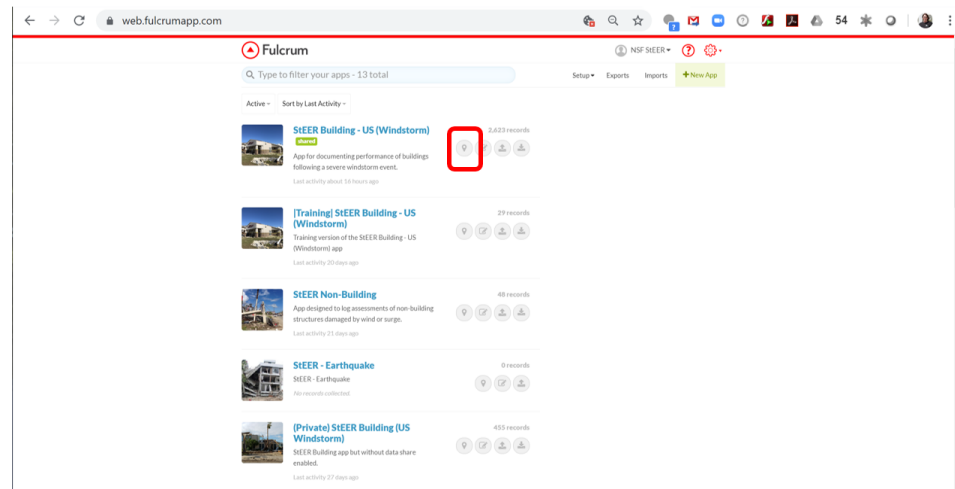
**StEER**  
STRUCTURAL  
EXTREME EVENTS  
RECONNAISSANCE

# Accessing Satellite Imagery in Fulcrum Quick Reference Sheet

Version 1.0  
Released September 18, 2019

## BROWSER INTERFACE

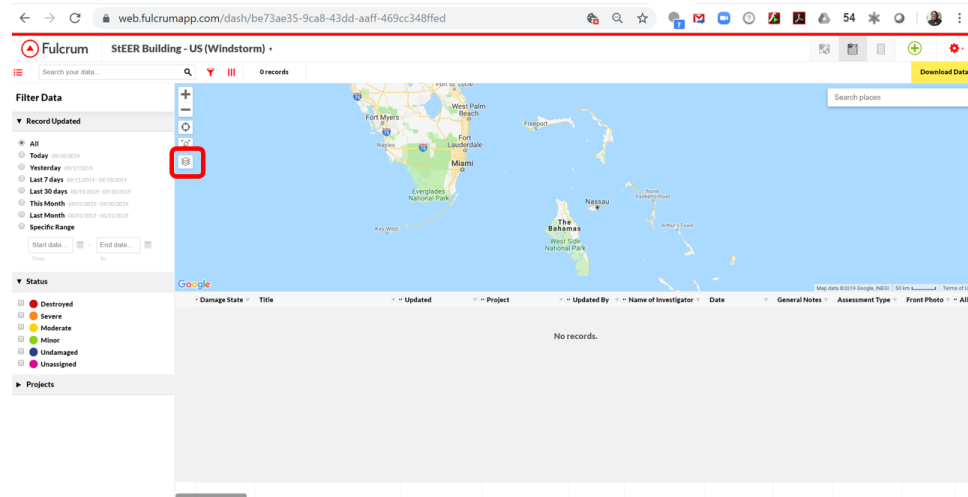
Login to Fulcrum at [www.fulcrumapp.com](http://www.fulcrumapp.com) and go to the desired app, e.g., StEER Building - US (Windstorm). Click on the pin icon to access the data.



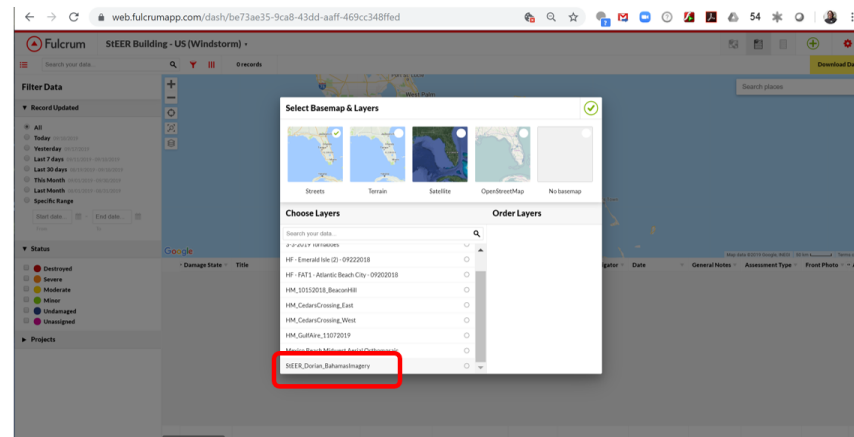
**StEER**  
STRUCTURAL  
EXTREME EVENTS  
RECONNAISSANCE

**Quick Reference Sheet: Fulcrum Enrollment**  
*Building Resilience through Reconnaissance*  
Version 1.1 | Released August 27, 2019

In the map view, click on the layer stack icon on the left hand side of the map.



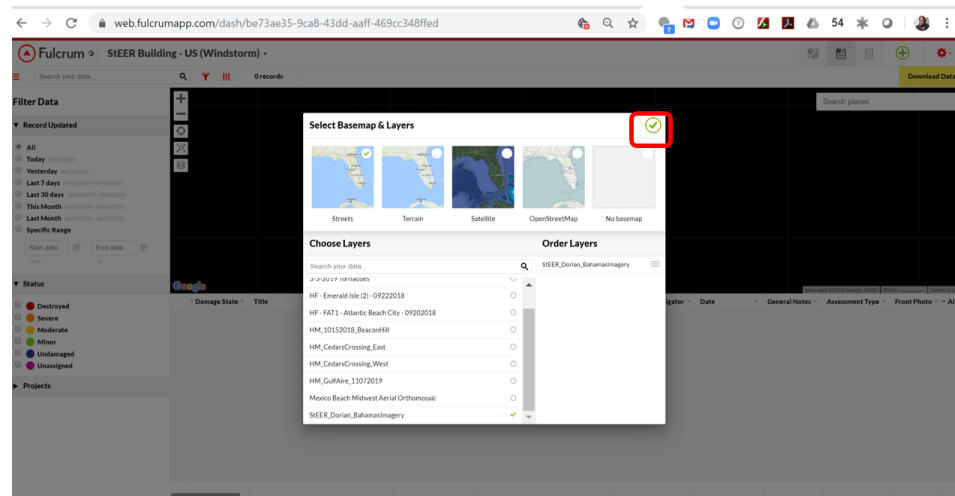
This will bring up your basemap and layers options. Look at the list of layers and make your selection.



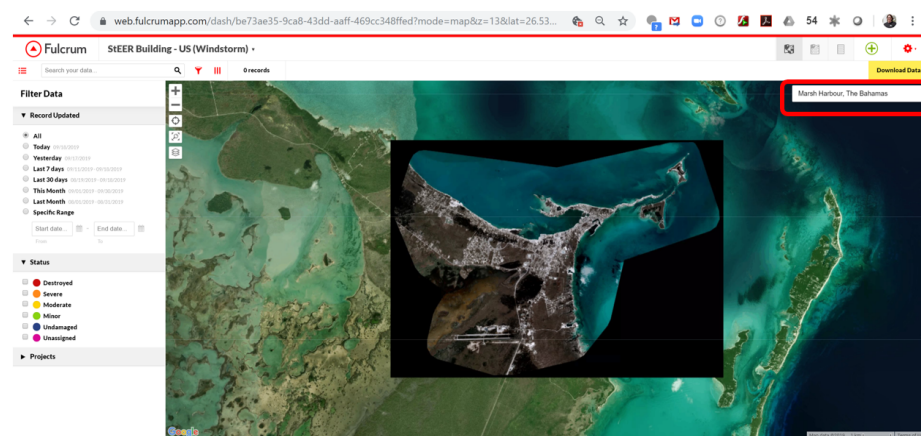
**StEER**  
STRUCTURAL  
EXTREME EVENTS  
RECONNAISSANCE

**Quick Reference Sheet: Fulcrum Enrollment**  
*Building Resilience through Reconnaissance*  
Version 1.1 | Released August 27, 2019

After selecting a layer(s), it/they should appear on the right side where they can be ordered. When you have the layer(s) ordered as you desire, click the check box in the upper right.



This will now load the layer in. Note that some of the satellite imagery is confined to a small area and may have clipping (black) in areas outside the imaging domain. It is advisable to type the name of the area imaged in the search bar in the upper right and hit return. This will center the display over the imaged area, allowing you to zoom in further to interact with the satellite data.

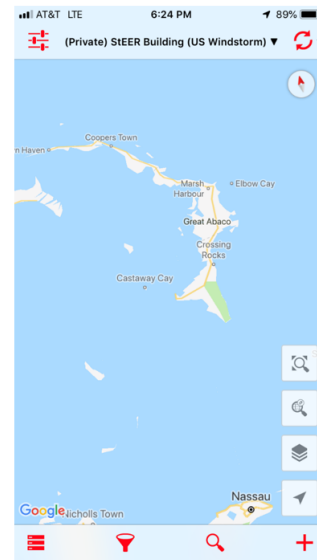


**StEER**  
STRUCTURAL  
EXTREME EVENTS  
RECONNAISSANCE

**Quick Reference Sheet: Fulcrum Enrollment**  
*Building Resilience through Reconnaissance*  
Version 1.1 | Released August 27, 2019

## MOBILE APP INTERFACE

1. Make sure your Fulcrum App is synchronized by clicking the circular arrow pair in the upper right.
2. After synchronizing, click on the layer stack icon in the lower right.



1. CLICK TO SYNCHRONIZE

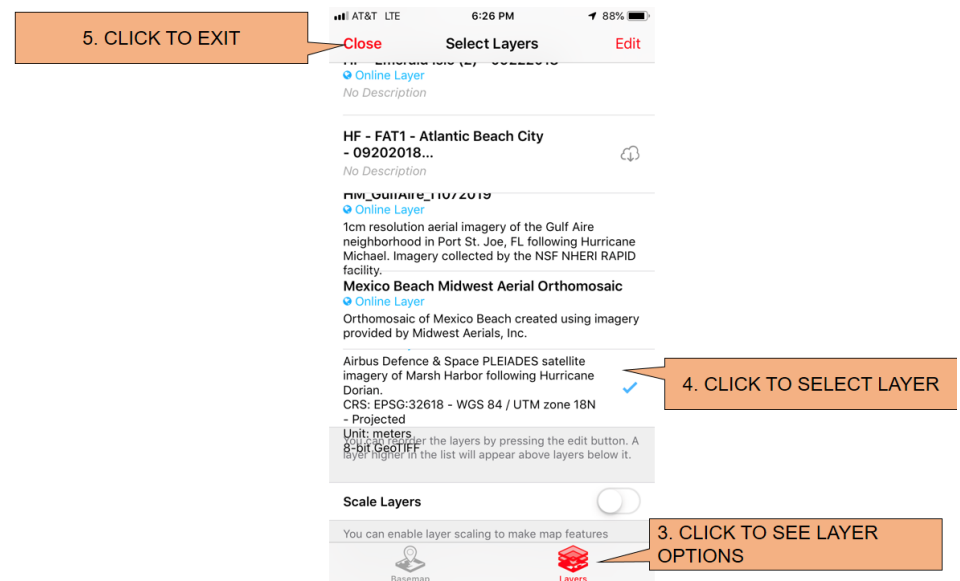
2. CLICK TO ACCESS LAYERS



**StEER**  
STRUCTURAL  
EXTREME EVENTS  
RECONNAISSANCE

**Quick Reference Sheet: Fulcrum Enrollment**  
*Building Resilience through Reconnaissance*  
Version 1.1 | Released August 27, 2019

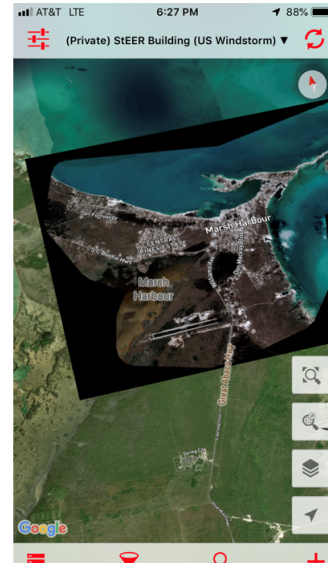
3. When the menu appears, click on the layers stack at the bottom right. This will display the list of all available satellite imagery StEER has pre-loaded as layers in Fulcrum.
4. Click the layer(s) of interest. A blue check mark will appear on the right when layer is selected.
5. Click Close on the upper left when finished.



**StEER**  
STRUCTURAL  
EXTREME EVENTS  
RECONNAISSANCE

**Quick Reference Sheet: Fulcrum Enrollment**  
*Building Resilience through Reconnaissance*  
Version 1.1 | Released August 27, 2019

6. This will take you back out the map interface. If desired, click on the Location search bar icon on the lower right to enter the location of the imagery. Doing so will navigate your display to the location of the selected satellite image now visible as an overlay.



6. LOCATION SEARCH BAR



**StEER**  
STRUCTURAL  
EXTREME EVENTS  
RECONNAISSANCE

**Quick Reference Sheet: Fulcrum Enrollment**  
*Building Resilience through Reconnaissance*  
Version 1.1 | Released August 27, 2019